



DREAMCATCHERBOATS.COM

604-873-0082

PLANS AND SCANTLINGS FOR THE

"BIG LASSIE"

14' (4.27m)

**ULTRALIGHT SKIN-ON-FRAME
CANOE**

COPYRIGHT DREAMCATCHERBOATS.COM®



Make full size frames by folding along the center line.
Locate frames 17" (43 cm) away from each other. #5 is center frame. ● Marks along #5 and #2 frames indicate where holes go for ties to hold stringers, keelson and gunwales. Add corresponding holes to other frames after frames are located on strongback and stringers are held to #2 frames. Space ribs 10" apart.

SCANTLINGS: all 15' (4.47m) long, to be trimmed to fit

| | |
|--------------------|--|
| Gunwales (make 2) | 3/8" x 1 1/2" (9mm x 37.5mm) |
| Inwales (make 2) | 3/8" x 3/4" (9mm x 18mm) |
| Outwales (make 2) | 3/8" x 3/4" (9mm x 18mm) |
| Keelson (make 1) | 3/4" x 7/8" (18mm x 22mm) |
| Stringers (make 8) | 1/2" x 1/2" (12.5mm x 12.5mm) |
| Ribs (make 18) | 3/16" x 1 1/2" (4.5mm x 37.5mm) |
| Floors (make 7) | 1/4" x 1 1/2" x 10' (6mm x 37.5mm x 305cm) |

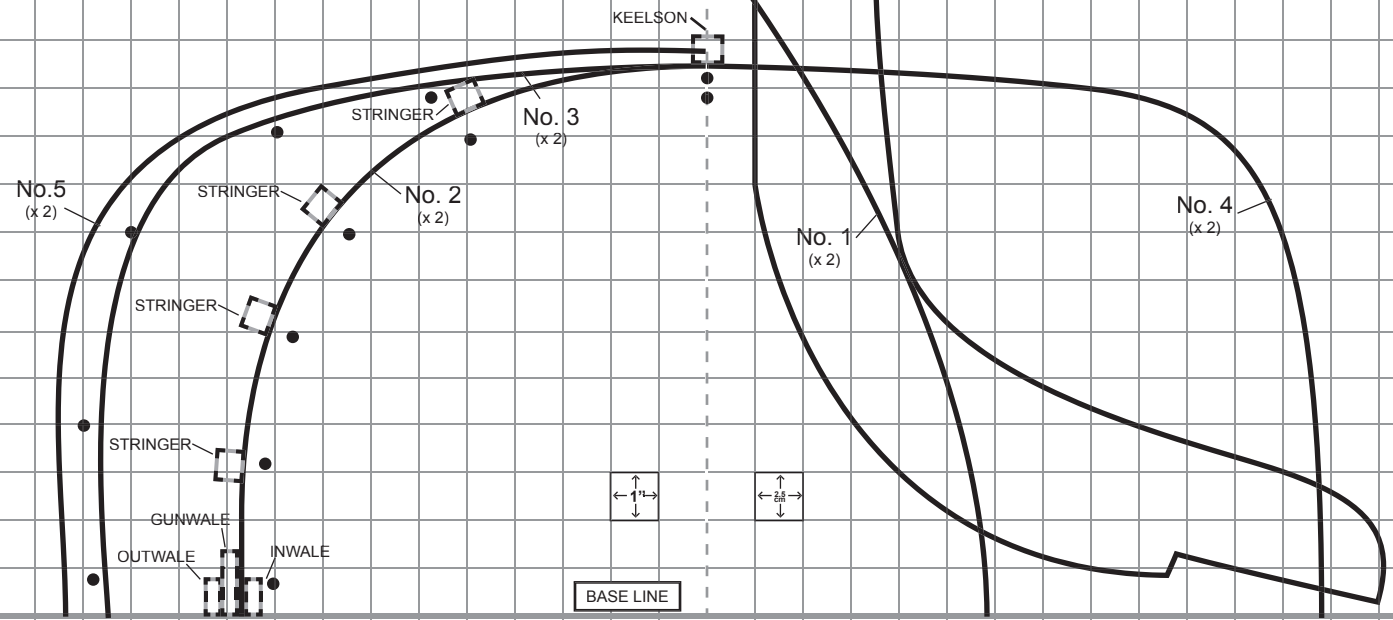
Stems & Breasthooks 3/4" (18mm) plywood

You must make the breasthooks to suit your boat.

Note: In order to build the boat, you need the video. If you don't already have it, you can order your video online from dreamcatcherboats.com, or by calling 604.873.0082.

HAVE FUN!
RIDE YOUR DREAMS

STEM
(X 2)



BASE LINE

THESE PLANS ARE COPYRIGHT PROTECTED, AND ARE INTENDED FOR PRIVATE, PERSONAL USE TO BUILD TWO BOATS ONLY. PLEASE DO NOT SELL, COPY OR OTHERWISE DISTRIBUTE THESE PLANS. IF YOU WANT ADDITIONAL PLANS PLEASE CONTACT US.